









Worklist: 5009

<u>LAB CASE</u>	<u>ITEM</u>	<u>ITEM TYPE</u>	<u>DESCRIPTION</u>	
M2021-2244	2	BCK	AM 25/AM 26 Blood MultiDrug/THC Screen by LC-QQQ	
M2021-2271	2	BCK	AM 25/AM 26 Blood MultiDrug/THC Screen by LC-QQQ	
P2021-1662	1	BCK	AM 25/AM 26 Blood MultiDrug/THC Screen by LC-QQQ	
P2021-1663	1	BCK	AM 25/AM 26 Blood MultiDrug/THC Screen by LC-QQQ	
P2021-1690	1	BCK	AM 25/AM 26 Blood MultiDrug/THC Screen by LC-QQQ	
P2021-1691	1	BCK	AM 25/AM 26 Blood MultiDrug/THC Screen by LC-QQQ	
P2021-1692	1	BCK	AM 25/AM 26 Blood MultiDrug/THC Screen by LC-QQQ	
P2021-1693	5	BCK	AM 25/AM 26 Blood MultiDrug/THC Screen by LC-QQQ	
P2021-1697	1	BCK	AM 25/AM 26 Blood MultiDrug/THC Screen by LC-QQQ	
P2021-1701	1	BCK	AM 25/AM 26 Blood MultiDrug/THC Screen by LC-QQQ	
P2021-1702	1	BCK	AM 25/AM 26 Blood MultiDrug/THC Screen by LC-QQQ	
P2021-1705	1	BCK	AM 25/AM 26 Blood MultiDrug/THC Screen by LC-QQQ	
P2021-1706	1	BCK	AM 25/AM 26 Blood MultiDrug/THC Screen by LC-QQQ	
P2021-1725	1	BLOOD	AM 25/AM 26 Blood MultiDrug/THC Screen by LC-QQQ	
P2021-1735	1	BCK	AM 25/AM 26 Blood MultiDrug/THC Screen by LC-QQQ	
P2021-1736	1	BCK	AM 25/AM 26 Blood MultiDrug/THC Screen by LC-QQQ	
P2021-1760	1	BCK	AM 25/AM 26 Blood MultiDrug/THC Screen by LC-QQQ	
P2021-1761	1	BCK	AM 25/AM 26 Blood MultiDrug/THC Screen by LC-QQQ	
P2021-1764	1	BCK	AM 25/AM 26 Blood MultiDrug/THC Screen by LC-QQQ	
P2021-1765	1	BCK	AM 25/AM 26 Blood MultiDrug/THC Screen by LC-QQQ	
P2021-1766	1	BCK	AM 25/AM 26 Blood MultiDrug/THC Screen by LC-QQQ	

Worklist: 5009

SC

<u>LAB CASE</u>	<u>ITEM</u>	<u>ITEM TYPE</u>	<u>DESCRIPTION</u>	
P2021-1767	1	BCK	AM 25/AM 26 Blood MultiDrug/THC Screen by LC-QQQ	
P2021-1772	1	BCK	AM 25/AM 26 Blood MultiDrug/THC Screen by LC-QQQ	
P2021-1800	1	BCK	AM 25/AM 26 Blood MultiDrug/THC Screen by LC-QQQ	
P2021-1801	1	BCK	AM 25/AM 26 Blood MultiDrug/THC Screen by LC-QQQ	
P2021-1832	2	BCK	AM 25/AM 26 Blood MultiDrug/THC Screen by LC-QQQ	
P2021-1846	1	BCK	AM 25/AM 26 Blood MultiDrug/THC Screen by LC-QQQ	
P2021-1848	1	BCK	AM 25/AM 26 Blood MultiDrug/THC Screen by LC-QQQ	
P2021-1850	1	BCK	AM 25/AM 26 Blood MultiDrug/THC Screen by LC-QQQ	

AM# 25: Multi-Drug Screen in Blood and Urine by LC-MS/MS

Extraction Date: 06/02/21
Plate lot#: IDP-120-201206

Analyst: Sarah Collins
Plate Expiration: 06/06/21

Mobile phase A: 10mM Amm Form
Instant Buffer I

Blank Blood Lot: Lampire 20L20724
LCMS-QQQ ID: 069901

Mobile phase B: 0.1% Formic Acid in MeOH
Ethyl Acetate LC Methanol

Column: Phenomenex Phenyl Hexyl (4.6x50mm, 2.6um)

Pre-Analytic:

- 1. Check levels of mobile phases and needle wash refill as needed. Ensure waste is not full.
- 2. Ensure correct column is installed and begin mobile phase flow allow to equilibrate ~ 30 minutes.

Analytic:

- 1. Remove standards, plate, controls, and samples from cold storage. Allow to reach room temperature.
- 2. Urine Hydrolysis: In blank well, add 250µL urine, 40µL BG Turbo, and 100µL Instant Buffer I. Place on plate shaker for 5 minutes.
- 3. Using a calibrated pipette, pipette **250µL blood and urine** (if applicable) into wells of analytical (standards) plate.
Pipette ID: #16
- 4. Place on shaking incubator at ambient temp., 900rpm for 15 minutes.
- 5. Pipette **250µL 0.5 M ammonium hydroxide** in wells of analytical plate.
- 6. Place on shaking incubator at ambient temp., 900rpm for 15 minutes.
- 7. Transfer **200-450µL of blood+base and urine+base (if applicable)** mixture to corresponding wells of SLE+ plate.
Amount transferred: 300 uL
- 8. Apply positive pressure for approx. 10-15 seconds (or until no liquid remains on top of sorbent).
(Load at 85-100 PSI- Selector to the right).
- 9. Wait 5 minutes.
- 10. Add **900uL ethyl acetate.**
- 11. Wait 5 minutes.
- 12. Apply positive pressure for approx. 15 seconds. *(10-15 PSI- Selector to the left).*
- 13. Add **900uL ethyl acetate.**
- 14. Wait 5 minutes.
- 15. Apply positive pressure for approx. 15 seconds. *(10-15 PSI- Selector to the left).*
- 16. Remove plate containing eluate. Place on SPE Dry and evaporate to dryness at approx. 35°C. If run contains urine, add 50µL 1% HCl in MeOH to wells and place plate cover on plate before drying.
- 17. Reconstitute in **100µL 20% LC MeOH** and heat seal plate with foil. Place in autosampler and run worklist.

Post-Analytic

- 1. Open quantitation software and create a new quantitation batch.
- 2. Make necessary changes to integration limits
- 3. Evaluate samples, S/N of primary transition >5 and S/N of secondary transition >3 or evaluation of peak symmetry and resolution. Within +/- 2% or 0.1 min RT of administrative control. Calculated concentration of 5 or greater or 2-5 for discretionary range.
- 4. Did all QCs pass for each analyte? If no, describe issue in comments (below).
- 5. Central File Packet to include: LIMS Worklist, Method Checklist, Calibration and Control Reports

COMMENTS:

80

	1	2	3	4	5	6	7	8	9	10	11	12
A	IS + Cal. 1								p2021-1850-1	p2021-1766-1	p2021-1706-1	p2021-1690-1
B	IS + Cal. 1								p2021-1848-1	p2021-1765-1	p2021-1705-1	p2021-1663-1
C									p2021-1846-1	p2021-1764-1	p2021-1702-1	p2021-1662-1
D									p2021-1832-2	p2021-1761-1	p2021-1701-1	m2021-2271-2
E									p2021-1801-1	p2021-1760-1	p2021-1697-1	m2021-2244-2
F									p2021-1800-1	p2021-1736-1	p2021-1693-5	negative blood
G									p2021-1772-1	p2021-1735-1	p2021-1692-1	IS + Cal. 1
H									p2021-1767-1	p2021-1725-1	p2021-1691-1	IS + Cal. 1

AM #25 Multi-Drug Screen Results

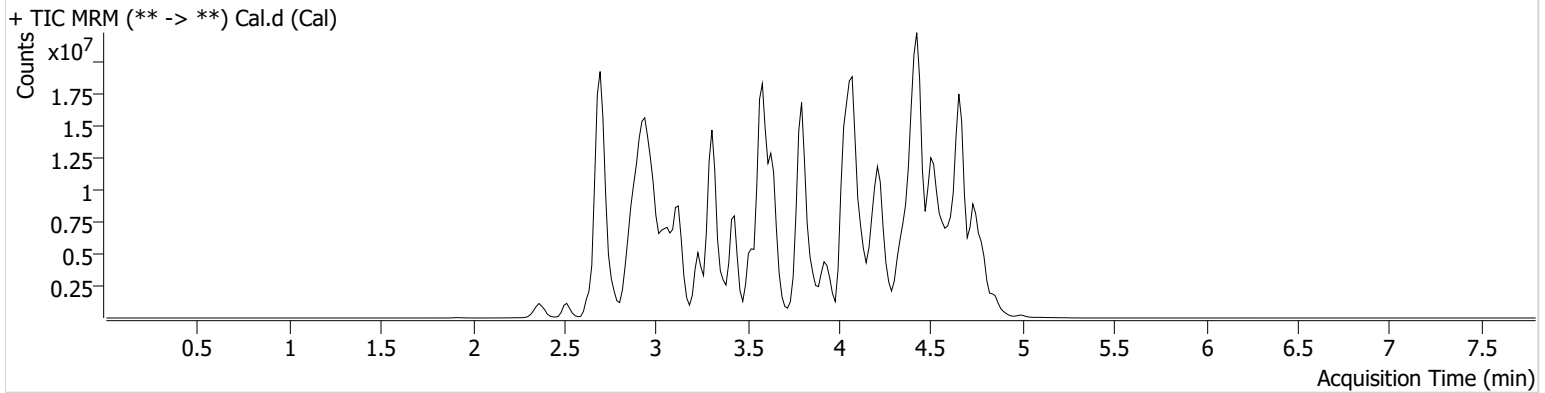
SC



Batch results D:\MassHunter\Data\2021\AM 25-26\060221 AM 25 26 SC\QuantResults\AM 25.batch.bin
Calibration Last Update 6/3/2021 9:32:23 AM

Instrument	Falco (069901)	Data File	Cal.d
Type	Cal	Sample	Cal
Acq. Method	AM 25 MDS.m	Operator	Sarah Collins
Sample Position	P2-H12	Comment	
Injection Volume	5		
Acq. Date-Time	6/2/2021 5:07:12 PM		

Sample Chromatogram



Name	RT	Resp.	S/N	S/N	ISTD Resp.	Calc. Conc.
6-MAM	2.953	90092	64356.96	85010.52	2716648	10.0000
7-aminoclonazepam	3.569	2414725	176.43	13698.84	10891875	10.0000
7-aminoflunitrazepam	3.783	4323485	393.36	1000.09	10891875	10.0000
Acetyl Fentanyl	3.964	338197	714.69	91078.81	36548386	10.0000
Acetyl Norfentanyl	2.886	526935	292.36	576.70	36548386	10.0000
a-hydroxyalprazolam	4.515	593368	319.24	180.39	10891875	10.0000
alpha-hydroxymidazolam	4.591	3473458	306.21	502.24	10891875	10.0000
Alpha-PHP	3.865	4526060	10423.15	507.56	36548386	10.0000
alpha-PVP	3.575	5117621	499.20	287.17	11900228	10.0000
Alprazolam	4.626	4479682	1535.73	438.85	31861070	10.0000
Amitriptyline	4.461	1279190	54.53	125.06	5479530	10.0000
Amphetamine	2.890	5009678	1314.30	863.41	11900228	10.0000
Benzoylcegonine	3.369	387398	171161.39	138.82	659036	10.0000
Brompheniramine	4.041	74732	117.26	235.26	40349421	10.0000
Buprenorphine	4.847	766994	14606.14	105375.20	3681216	10.0000
Bupropion	3.819	5489514	27468.64	707.94	19663634	10.0000
Carbamazepine	4.235	15413005	∞	23505.30	1212407	10.0000
Carisoprodol	4.217	2344468	2705196.76	275.16	14742276	10.0000
Chlordiazepoxide	4.735	1303035	387.56	1842.96	31861070	10.0000
Chlorpheniramine	3.954	5862405	3544.97	5.64	40349421	10.0000
Citalopram	4.071	2885082	817.28	558973.62	40349421	10.0000
Clomipramine	4.655	2561122	17722.41	1924.67	40349421	10.0000
Clonazepam	4.440	2368445	1942.07	597.78	31861070	10.0000
Clonazolam	4.375	2849462	778566.21	377026.30	31861070	10.0000
Cocaethylene	3.796	6136276	8803829.86	2085.90	31645755	10.0000
Cocaine	3.582	5712768	5993.76	587582.68	31645755	10.0000
Codeine	2.866	494300	350333.61	1035.69	15281401	10.0000
Cyclobenzaprine	4.370	1691159	1168.56	59.94	5479530	10.0000
Desipramine	4.386	3154655	1105.08	238.49	5479530	10.0000
Dextromethorphan	4.093	1564638	340.73	103.90	8166366	10.0000
Dextrorphan	3.372	3025555	532.30	1141.00	8166366	10.0000
Diazepam	4.859	1896200	4589.34	2284.90	31861070	10.0000
Dihydrocodeine	2.774	1395340	327.13	716.83	15281401	10.0000
Diphenhydramine	4.032	7419040	1980.51	7865.59	40349421	10.0000

Cal

SC



AM #25 Multi-Drug Screen Results

Name	RT	Resp.	S/N	S/N	ISTD Resp.	Calc. Conc.
Doxepin	4.168	1312757	236.08	197.42	22599380	10.0000
Doxylamine	3.647	11794625	349.52	14038.71	8166366	10.0000
EDDP	4.077	1351086	352.06	91.97	2942956	10.0000
Estazolam	4.536	9854826	2252.13	2304.70	31861070	10.0000
Etizolam	4.636	663905	420563.09	1963877.93	31861070	10.0000
Fentanyl	4.193	198459	134.24	100515.80	14147086	10.0000
Flualprazolam	4.484	1733996	1928637.86	690938.11	31861070	10.0000
Flunitrazepam	4.564	4628202	2027483.80	1218933.32	31861070	10.0000
Fluoxetine	4.335	2105300	1910.79	105.67	5698106	10.0000
Flurazepam	4.252	3154001	1748633.20	373786.21	31861070	10.0000
Hydrocodone	3.064	2131945	920.82	483.22	15281401	10.0000
Hydromorphone	2.519	1907064	2384.74	3398.95	186595	10.0000
Imipramine	4.414	3621620	500.75	76.25	5479530	10.0000
Ketamine	3.651	5416291	1802.52	110.12	21523109	10.0000
Lamotrigine	3.618	397141	1985.64	15016.53	40349421	10.0000
Levamisole	3.009	3590092	2324784.51	347.99	31645755	10.0000
Levetiracetam	2.644	2130369	1022.26	9134.20	40349421	10.0000
Lorazepam	4.439	937908	218.10	1152.05	31861070	10.0000
Maprotiline	4.385	288776	31.56	125.12	5479530	10.0000
MDA	2.994	3683483	243.90	107.42	27455881	10.0000
MDEA	3.238	5157453	1043.65	1869.82	27455881	10.0000
MDMA	3.085	6874631	1750.12	467.18	27455881	10.0000
Meperidine	3.619	2392731	347.65	2639.05	8166366	10.0000
Meprobamate	3.652	1309068	1073.90	264.09	14742276	10.0000
Methadone	4.395	4178082	785.21	209.28	2942956	10.0000
Methamphetamine	2.996	6506317	349.34	256.80	27455881	10.0000
Methocarbamol	3.573	655618	204.41	396622.23	2942956	10.0000
Methylphenidate	3.528	13181969	383.67	1011.14	24011667	10.0000
Metoprolol	3.433	918327	296.60	1292472.21	8166366	10.0000
Midazolam	4.776	827867	583.56	194645.93	31861070	10.0000
Mirtazapine	4.125	3217377	11677.03	25302.85	8166366	10.0000
Mitragynine	4.267	316481	182735.24	417936.57	8166366	10.0000
Morphine	2.352	361306	∞	173.05	186595	10.0000
Norbuprenorphine	3.838	78046	77987.94	84607.78	3681216	10.0000
Nordiazepam	4.692	2746859	3307557.64	407.11	31861070	10.0000
Norfentanyl	3.313	9793177	9441.20	735.52	36548386	10.0000
Norhydrocodone	2.929	53843	53.25	19.42	186595	10.0000
Norketamine	3.775	944921	323.53	3534.49	21523109	10.0000
Normeperidine	3.590	1627459	237.63	204.03	40349421	10.0000
Noroxycodone	2.881	1837907	245.62	487.00	21523109	10.0000
Nortriptyline	4.417	929870	230.65	177.98	5479530	10.0000
O-desmethyl-tramadol	2.915	11310662	28858.92	318.56	40349421	10.0000
Olanzapine	3.490	23677	16451.38	6876.76	1212407	10.0000
Oxazepam	4.505	4541926	1071.74	510.71	20818789	10.0000
Oxycodone	2.939	4213787	1207.37	1393.24	21523109	10.0000
Oxymorphone	2.363	1905705	425.30	986.69	186595	10.0000
Paroxetine	4.346	328167	457704.36	1214.62	5698106	10.0000
Phenazepam	4.636	4252273	853.92	1838.36	31861070	10.0000
Phencyclidine	3.926	5419487	3387.11	380.95	8166366	10.0000
Phentermine	3.149	1948876	272.15	14.27	24011667	10.0000
Phenytoin	4.126	2222673	6325.25	710.77	1212407	10.0000
Promethazine	4.383	4985276	17425242.60	130.62	40349421	10.0000
Pseudoephedrine	2.705	55851490	13050.23	72741.58	27455881	10.0000
Quetiapine	4.604	3727422	2184759.95	711576.63	43060324	10.0000
Sertraline	4.581	1013109	2059722.62	8251.03	5698106	10.0000
Sufentanil	4.589	166706	907.23	226.85	36548386	10.0000
Tapentadol	3.438	7374322	883.03	752.48	21523109	10.0000
Temazepam	4.673	7151954	1274.02	220.94	31861070	10.0000
Tramadol	3.418	12544931	2440.29	56.53	40349421	10.0000
Trazodone	4.773	4790468	1045.78	1305640.43	22599380	10.0000

Cal

SC



AM #25 Multi-Drug Screen Results

Name	RT	Resp.	S/N	S/N	ISTD Resp.	Calc. Conc.
Venlafaxine	3.800	8735621	21174.88	523.70	5698106	10.0000
Zaleplon	4.351	4301919	6522771.25	6270.44	43060324	10.0000
Zolpidem	4.427	13242876	5591914.27	4721076.68	43060324	10.0000
Zopiclone	4.328	1210872	1062312.57	831734.76	6894007	10.0000

SC

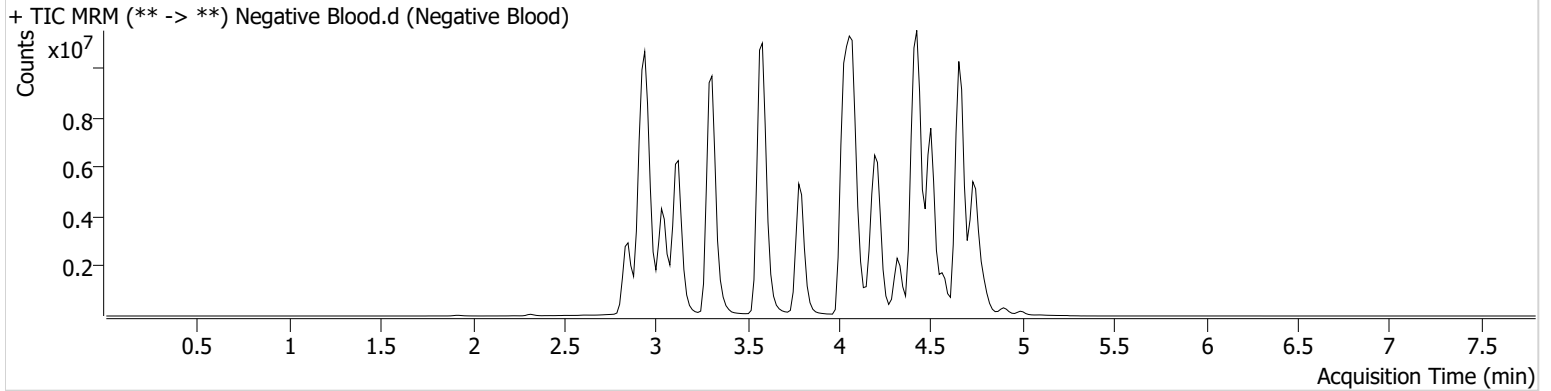


AM #25 Multi-Drug Screen Results

Batch results D:\MassHunter\Data\2021\AM 25-26\060221 AM 25 26 SC\QuantResults\AM 25.batch.bin
Calibration Last Update 6/3/2021 9:32:23 AM

Instrument	Falco (069901)	Data File	Negative Blood.d
Type	Sample	Sample	Negative Blood
Acq. Method	AM 25 MDS.m	Operator	Sarah Collins
Sample Position	P2-F12	Comment	
Injection Volume	5		
Acq. Date-Time	6/2/2021 5:15:46 PM		
Sample Info.			

Sample Chromatogram



SC

AM# 26: Screening of THC and Metabolites in Blood and Urine by LC-MS/MS

Extraction Date: 06/02/21Analyst: Sarah Collins

Plate lot#: IDP-108-2-210412

Plate Expiration: 10/12/2021

10mM Ammonium Formate 01/27/2023 SC

0.1% Formic Acid in Methanol 01/27/2023 SC

Mobile phase A: ~~0.1% Formic Acid in LCMS Water~~ **Mobile phase B:** ~~0.1% Formic acid in Acetonitrile~~**Blank Blood Lot:** Lampire 20L20724 **Column:** Phenomenex Phenyl Hexyl (4.6x50mm, 2.6um)**LCMS-QQQ ID:** 069901

Pre-Analytic:

- 1. Check levels of mobile phases and needle wash refill as needed. Ensure waste is not full.
- 2. Ensure correct column is installed and begin mobile phase flow allow to equilibrate ~ 30 minutes.

Analytic:

- 1. Remove standards, plate, controls, and samples from cold storage. Allow to reach room temperature.
- 2. Urine hydrolysis: add 1.5mL urine to blank plate, add 250µl 1N KOH. Shake and incubate at 40 degrees for 15 minutes.
Using a calibrated pipette, add **1000µl blood and urine (if applicable) (calibrated pipette)** into the appropriate wells of analytical (standards) plate. **Pipette ID:** 3382167
- 3. Place on shaking incubator at ambient temp., 900rpm for 15 minutes.
- 4. Pipette **500µL 0.1% formic acid in water blood sample, 500 µL saturated phosphate buffer in urine** in wells of analytical plate.
- 5. Place on shaking incubator at ambient temp., 900rpm for 15 minutes.
- 6. Transfer **700-800µL of blood+acid or urine+acid** mixture to corresponding wells of SLE+ plate.
Amount transferred: 800 uL
- 7. Apply positive pressure for approx. 10-15 seconds (or until no liquid remains on top of sorbent).
(Load at 85-100 PSI- Selector to the right)
- 8. Wait 5 minutes.
- 9. Add **2.25mL MTBE. (Add in 3 increments of 750uL)**
- 10. Wait 5 minutes.
- 11. Apply positive pressure for approx. 15 seconds. **(10-15 PSI- Selector to the left).**
- 12. Add **2.25mL Hexane. (Add in 3 increments of 750uL)**
- 13. Wait 5 minutes.
- 14. Apply positive pressure for approx. 15 seconds. **(10-15 PSI- Selector to the left).**
- 15. Remove plate containing eluate. Place on SPE Dry and evaporate to dryness at approx. 35°C.
- 16. Reconstitute in **100µL 100% MeOH** and heat seal plate with foil. Place in autosampler and run worklist.

Post-Analytic

- 1. Create batch and process data.
- 2. Make any necessary integration changes, Curve weighting of Linear 1/x with r^2 values ≥ 0.98 for each analyte
- 3. RT +/- 3% or 0.100 min, whichever is greater, +/- 20% Accuracy for greater than (+/- 30% for 10ng/ml or less).
- 4. Case sample response for THC and OH-THC 3ng/mL (quantitative), Carboxy-THC: 10ng/mL (qualitative only) will be reported. Samples with a THC or OH-THC response over 50 ng/mL will be reported out as greater than 50 ng/mL.
- 5. Did all QCs pass for each analyte? (if not, describe in comments section)
- 6. Enter QCs into control charting.
- 7. Central File Packet to include: LIMS Worklist, Method Checklist, Calibration and Control Reports

COMMENTS: The pressure maxed out before case sample P2021-1690 could inject. The clog was removed and the run continued normally.

80

	1	2	3	4	5	6
A	IS + Cal. 1	negative blood	p2021-1693-5	p2021-1736-1	p2021-1800-1	
B	IS + Cal. 2	m2021-2244-2	p2021-1697-1	p2021-1760-1	p2021-1801-1	
C	IS + Cal. 3	m2021-2271-2	p2021-1701-1	p2021-1761-1*	p2021-1832-2	
D	IS + Cal. 4	p2021-1662-1	p2021-1702-1	p2021-1764-1	p2021-1846-1	
E	IS + Cal. 5	p2021-1663-1	p2021-1705-1	p2021-1765-1	p2021-1848-1	
F	IS + Cal. 6	p2021-1690-1	p2021-1706-1	p2021-1766-1	p2021-1850-1	
G	IS + Cal. 7	p2021-1691-1	p2021-1725-1	p2021-1767-1	p2021-1761-1	
H	IS + QC_1	p2021-1692-1	p2021-1735-1	p2021-1772-1		

All wells to contain 100 µl of residual DMSO

*Sample moved during analytical step 6 due to blood clot

SC

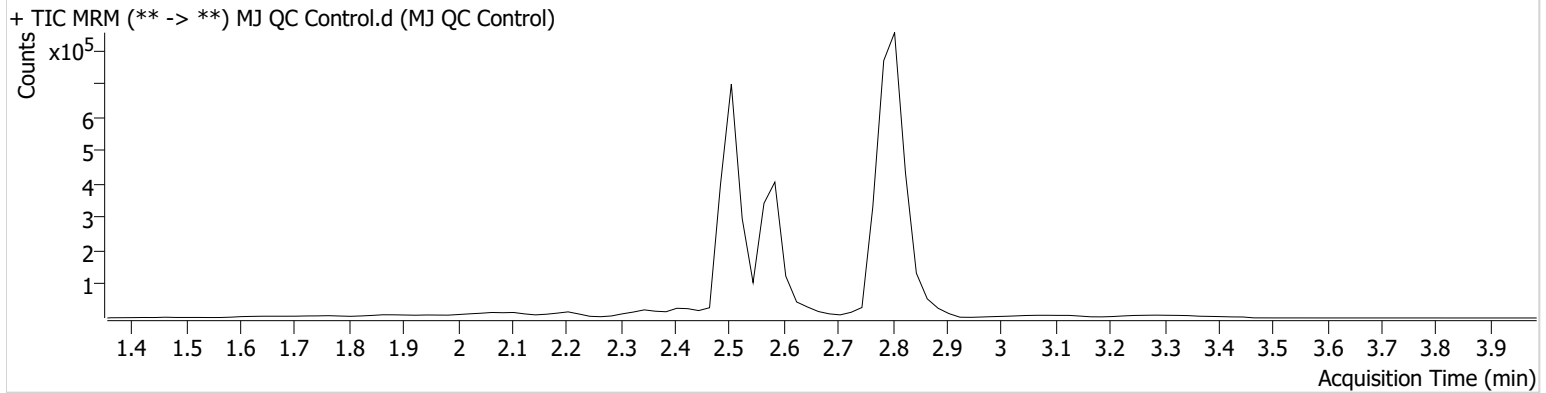


AM #26 Cannabinoids Screen Results

Batch results D:\MassHunter\Data\2021\AM 25-26\060221 AM 25 26 SC\QuantResults\AM 26.batch.bin
Calibration Last Update 6/3/2021 7:42:25 AM

Instrument	Falco (069901)	Data File	MJ QC Control.d
Type	Sample	Sample	MJ QC Control
Acq. Method	AM 26 THCS.m	Operator	Sarah Collins
Sample Position	P1-H1	Comment	
Injection Volume	10		
Acq. Date-Time	6/2/2021 12:02:21 PM		
Sample Info.			

Sample Chromatogram



Name	RT	Resp.	ISTD Resp.	Final Conc.
THC	2.839	3512	88344	4.7314 ng/ml
THC-COOH	2.587	152504	563867	18.0659 ng/ml
THC-OH	2.514	14739	1623117	4.9635 ng/ml

SC

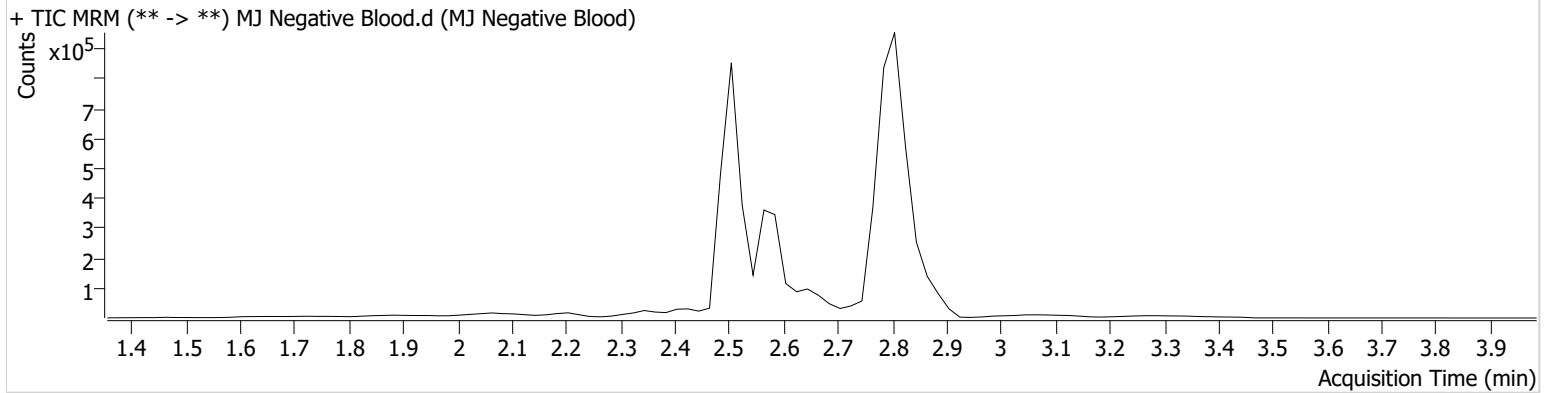


AM #26 Cannabinoids Screen Results

Batch results D:\MassHunter\Data\2021\AM 25-26\060221 AM 25 26 SC\QuantResults\AM 26.batch.bin
Calibration Last Update 6/3/2021 7:42:25 AM

Instrument	Falco (069901)	Data File	MJ Negative Blood.d
Type	Sample	Sample	MJ Negative Blood
Acq. Method	AM 26 THCS.m	Operator	Sarah Collins
Sample Position	P1-A2	Comment	
Injection Volume	10		
Acq. Date-Time	6/2/2021 12:15:27 PM		
Sample Info.			

Sample Chromatogram



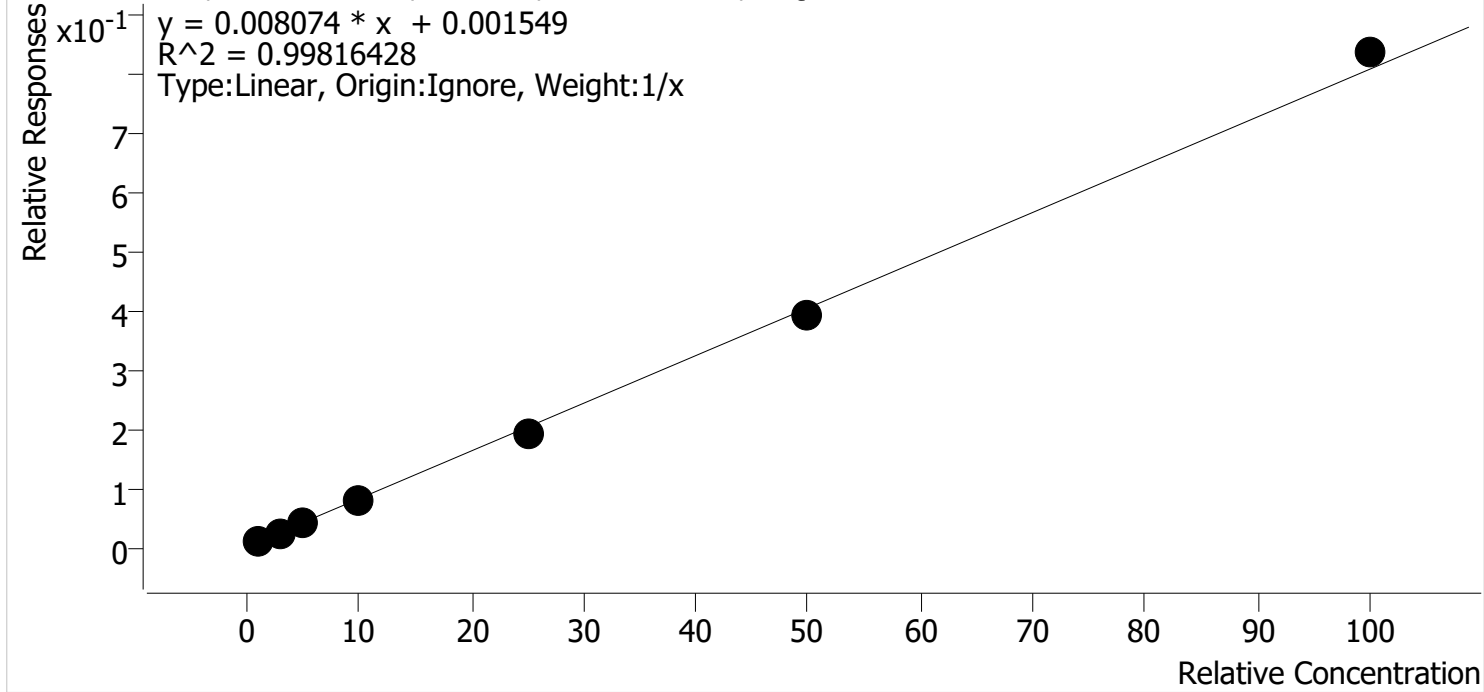
SC



AM #26 Cannabinoids Screen Calibration Curve Report

Batch results D:\MassHunter\Data\2021\AM 25-26\060221 AM 25 26 SC\QuantResults\AM 26.batch.bin
Last Cal. Update 6/3/2021 7:42 AM
Analyst Name ISP\datastor
Analyte THC **Internal Standard** THC-D3

THC - 7 Levels, 7 Levels Used, 7 Points, 7 Points Used, 0 QCs



Sample	Level	Enabled	Expected Concentration	Final Concentration	Accuracy
MJ Cal 1	1	✓	1.0	1.2	118.6
MJ Cal 2	2	✓	3.0	2.8	94.9
MJ Cal 3	3	✓	5.0	4.8	95.9
MJ Cal 4	4	✓	10.0	9.5	95.4
MJ Cal 5	5	✓	25.0	23.7	94.8
MJ Cal 6	6	✓	50.0	48.5	97.0
MJ Cal 7	7	✓	100.0	103.4	103.4

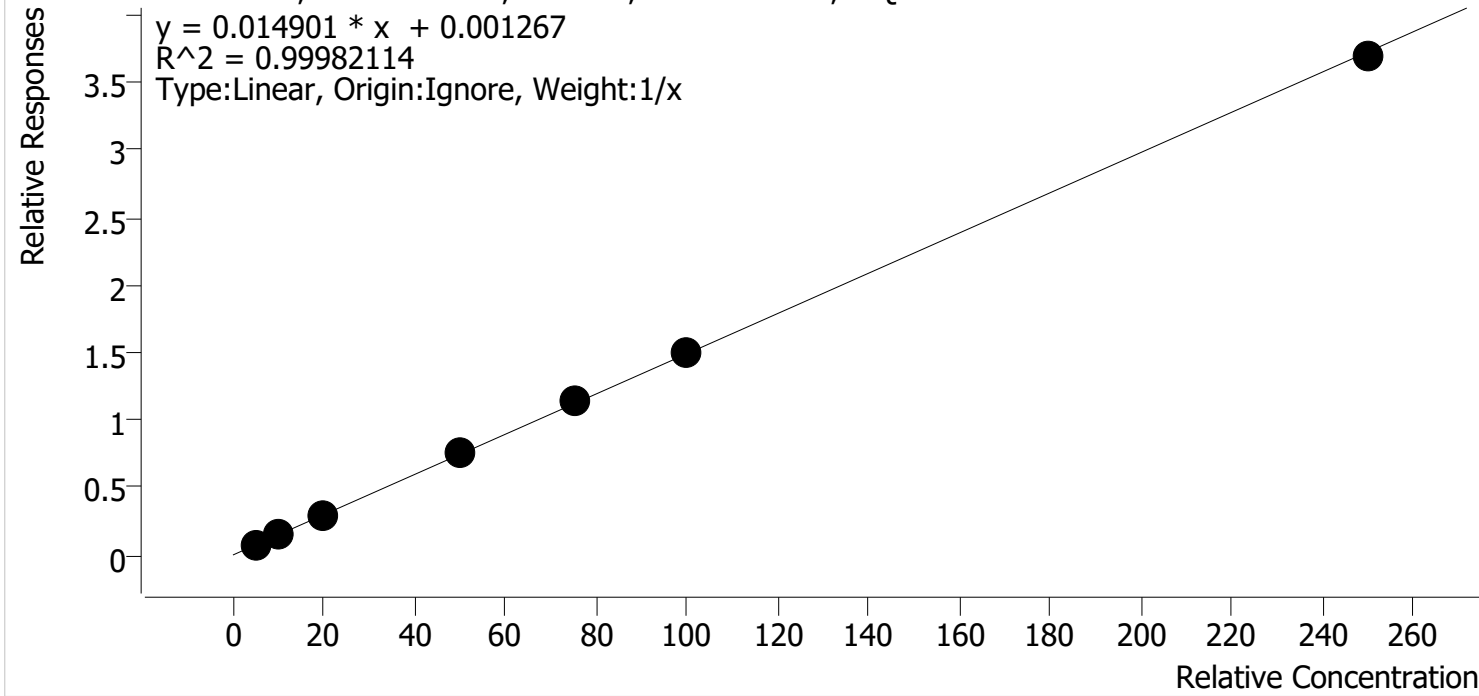
SC



AM #26 Cannabinoids Screen Calibration Curve Report

Batch results D:\MassHunter\Data\2021\AM 25-26\060221 AM 25 26 SC\QuantResults\AM 26.batch.bin
Last Cal. Update 6/3/2021 7:42 AM
Analyst Name ISP\datastor
Analyte THC-COOH **Internal Standard** THC-COOH-D9

THC-COOH - 7 Levels, 7 Levels Used, 7 Points, 7 Points Used, 0 QCs



Sample	Level	Enabled	Expected Concentration	Final Concentration	Accuracy
MJ Cal 1	1	✓	5.0	5.0	100.5
MJ Cal 2	2	✓	10.0	9.7	96.6
MJ Cal 3	3	✓	20.0	20.1	100.5
MJ Cal 4	4	✓	50.0	50.4	100.8
MJ Cal 5	5	✓	75.0	76.3	101.7
MJ Cal 6	6	✓	100.0	101.0	101.0
MJ Cal 7	7	✓	250.0	247.6	99.0

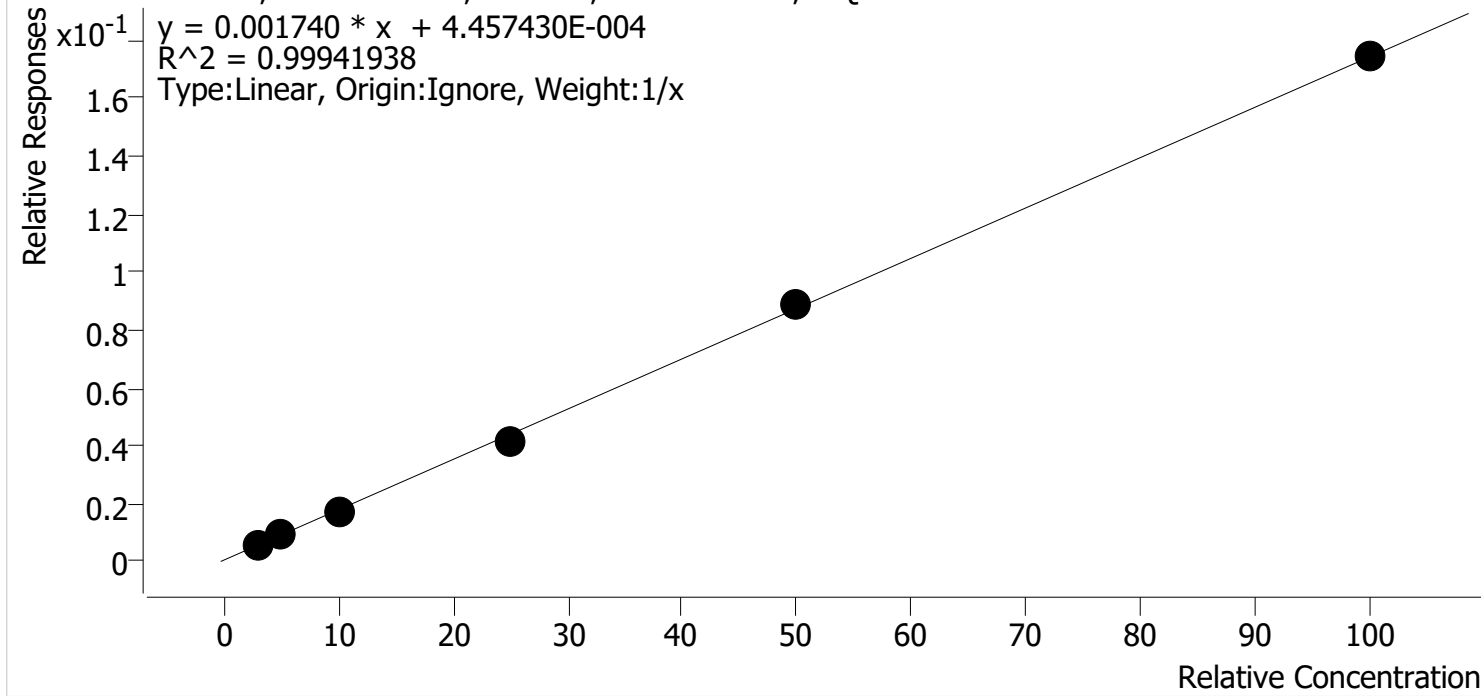
SC



AM #26 Cannabinoids Screen Calibration Curve Report

Batch results D:\MassHunter\Data\2021\AM 25-26\060221 AM 25 26 SC\QuantResults\AM 26.batch.bin
Last Cal. Update 6/3/2021 7:42 AM
Analyst Name ISP\datastor
Analyte THC-OH **Internal Standard** THC-OH-D3

THC-OH - 6 Levels, 6 Levels Used, 6 Points, 6 Points Used, 0 QCs



Sample	Level	Enabled	Expected Concentration	Final Concentration	Accuracy
MJ Cal 2	2	✓	3.0	3.1	102.6
MJ Cal 3	3	✓	5.0	5.1	101.5
MJ Cal 4	4	✓	10.0	9.8	98.1
MJ Cal 5	5	✓	25.0	23.9	95.5
MJ Cal 6	6	✓	50.0	51.1	102.3
MJ Cal 7	7	✓	100.0	100.0	100.0

SC

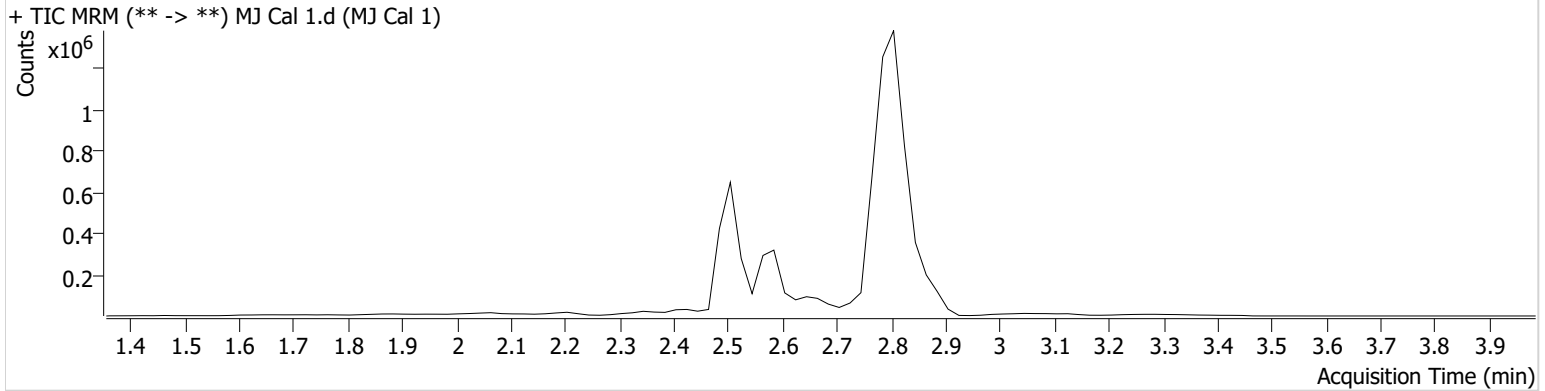


AM #26 Cannabinoids Screen Results

Batch results D:\MassHunter\Data\2021\AM 25-26\060221 AM 25 26 SC\QuantResults\AM 26.batch.bin
Calibration Last Update 6/3/2021 7:42:25 AM

Instrument	Falco (069901)	Data File	MJ Cal 1.d
Type	Cal	Sample	MJ Cal 1
Acq. Method	AM 26 THCS.m	Operator	Sarah Collins
Sample Position	P1-A1	Comment	
Injection Volume	10		
Acq. Date-Time	6/2/2021 11:16:31 AM		

Sample Chromatogram



Name	RT	Resp.	ISTD Resp.	Final Conc.	
THC	2.859	2011	180825	1.1857 ng/ml	Low
THC-COOH	2.587	42171	553890	5.0246 ng/ml	

SC

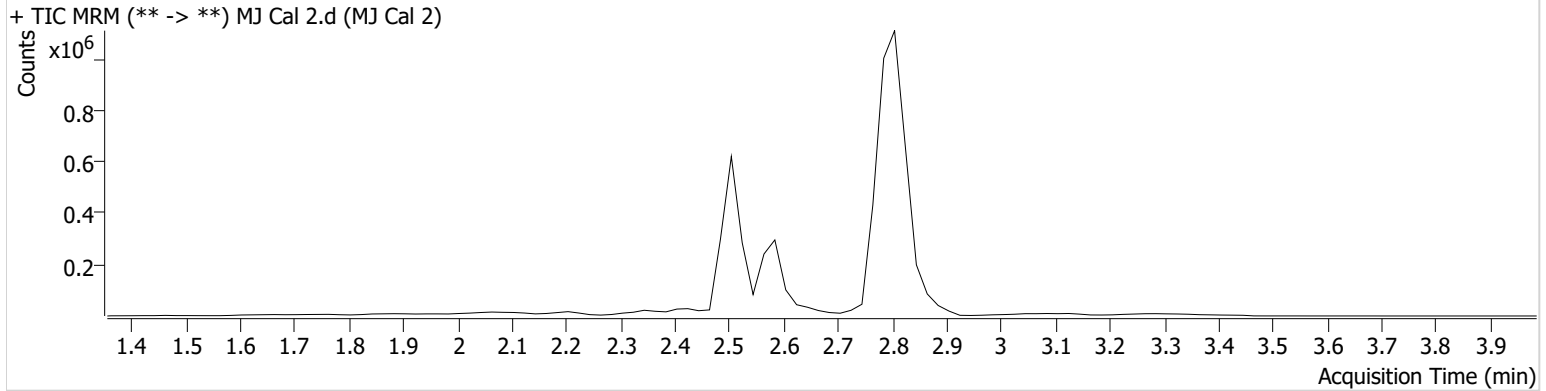


AM #26 Cannabinoids Screen Results

Batch results D:\MassHunter\Data\2021\AM 25-26\060221 AM 25 26 SC\QuantResults\AM 26.batch.bin
Calibration Last Update 6/3/2021 7:42:25 AM

Instrument	Falco (069901)	Data File	MJ Cal 2.d
Type	Cal	Sample	MJ Cal 2
Acq. Method	AM 26 THCS.m	Operator	Sarah Collins
Sample Position	P1-B1	Comment	
Injection Volume	10		
Acq. Date-Time	6/2/2021 11:23:13 AM		

Sample Chromatogram



Name	RT	Resp.	ISTD Resp.	Final Conc.	
THC	2.839	2826	115189	2.8467 ng/ml	Low
THC-COOH	2.587	69681	479919	9.6591 ng/ml	
THC-OH	2.514	8394	1447408	3.0771 ng/ml	

SC

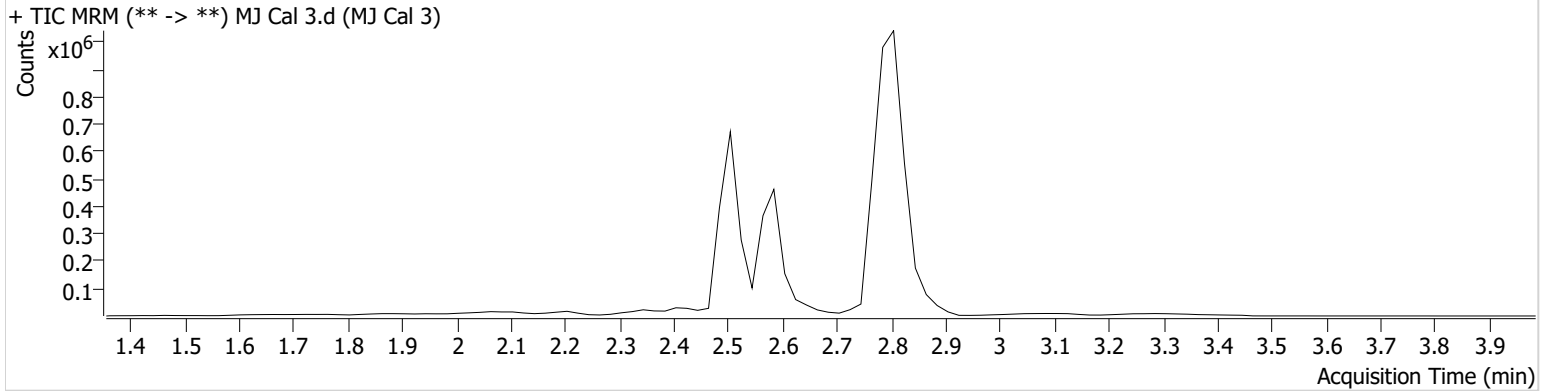


AM #26 Cannabinoids Screen Results

Batch results D:\MassHunter\Data\2021\AM 25-26\060221 AM 25 26 SC\QuantResults\AM 26.batch.bin
Calibration Last Update 6/3/2021 7:42:25 AM

Instrument	Falco (069901)	Data File	MJ Cal 3.d
Type	Cal	Sample	MJ Cal 3
Acq. Method	AM 26 THCS.m	Operator	Sarah Collins
Sample Position	P1-C1	Comment	
Injection Volume	10		
Acq. Date-Time	6/2/2021 11:29:44 AM		

Sample Chromatogram



Name	RT	Resp.	ISTD Resp.	Final Conc.
THC	2.839	4440	110293	4.7940 ng/ml
THC-COOH	2.587	179100	595738	20.0908 ng/ml
THC-OH	2.514	14699	1584237	5.0770 ng/ml

SC

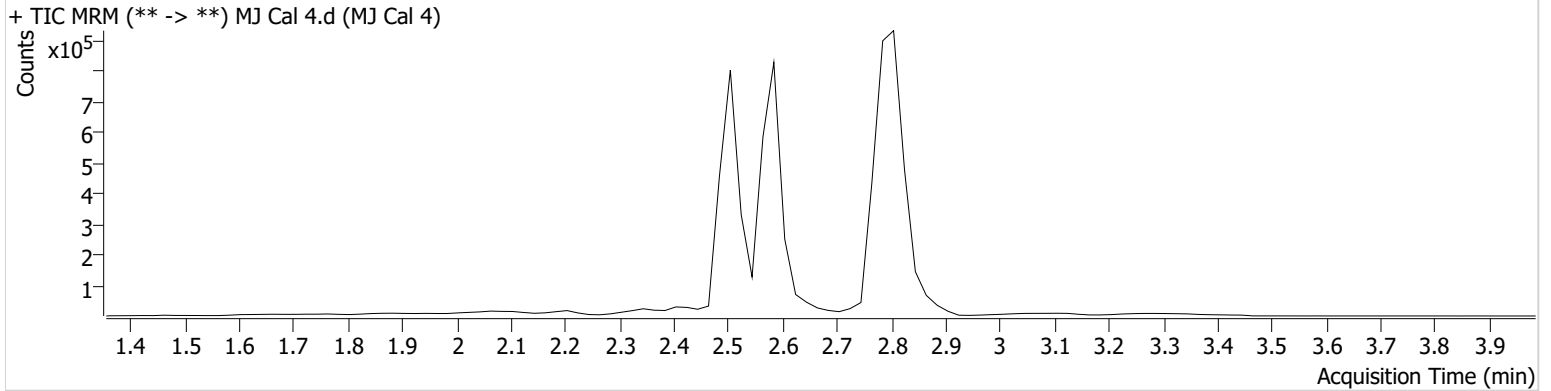


AM #26 Cannabinoids Screen Results

Batch results D:\MassHunter\Data\2021\AM 25-26\060221 AM 25 26 SC\QuantResults\AM 26.batch.bin
Calibration Last Update 6/3/2021 7:42:25 AM

Instrument	Falco (069901)	Data File	MJ Cal 4.d
Type	Cal	Sample	MJ Cal 4
Acq. Method	AM 26 THCS.m	Operator	Sarah Collins
Sample Position	P1-D1	Comment	
Injection Volume	10		
Acq. Date-Time	6/2/2021 11:36:15 AM		

Sample Chromatogram



Name	RT	Resp.	ISTD Resp.	Final Conc.
THC	2.839	7731	98360	9.5432 ng/ml
THC-COOH	2.587	480455	638989	50.3755 ng/ml
THC-OH	2.514	30595	1747881	9.8052 ng/ml

SC

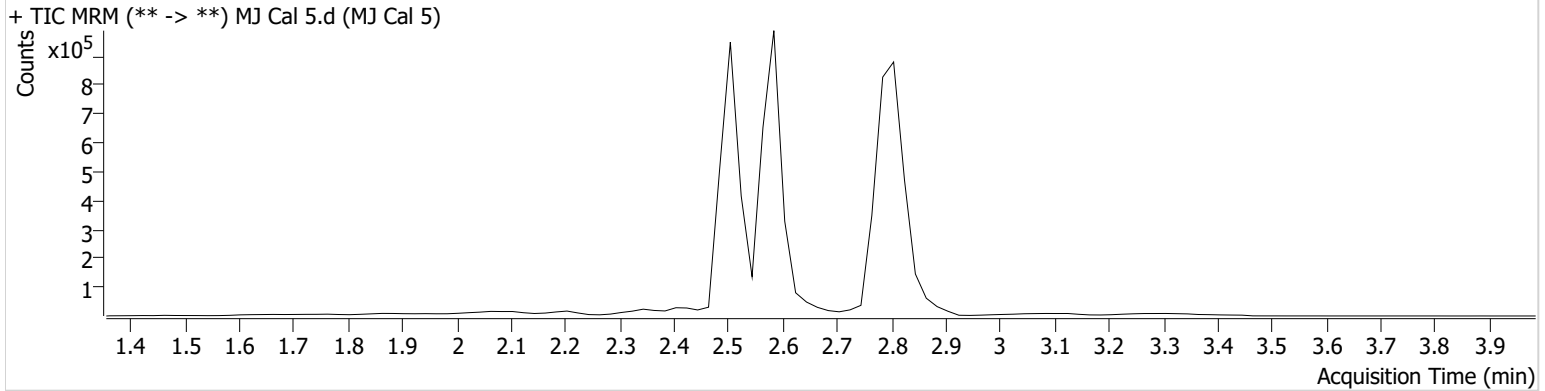


AM #26 Cannabinoids Screen Results

Batch results D:\MassHunter\Data\2021\AM 25-26\060221 AM 25 26 SC\QuantResults\AM 26.batch.bin
Calibration Last Update 6/3/2021 7:42:25 AM

Instrument	Falco (069901)	Data File	MJ Cal 5.d
Type	Cal	Sample	MJ Cal 5
Acq. Method	AM 26 THCS.m	Operator	Sarah Collins
Sample Position	P1-E1	Comment	
Injection Volume	10		
Acq. Date-Time	6/2/2021 11:42:47 AM		
Sample Info.			

Sample Chromatogram



Name	RT	Resp.	ISTD Resp.	Final Conc.
THC	2.839	17480	90593	23.7073 ng/ml
THC-COOH	2.587	656938	577486	76.2591 ng/ml
THC-OH	2.514	72061	1715657	23.8864 ng/ml

SC

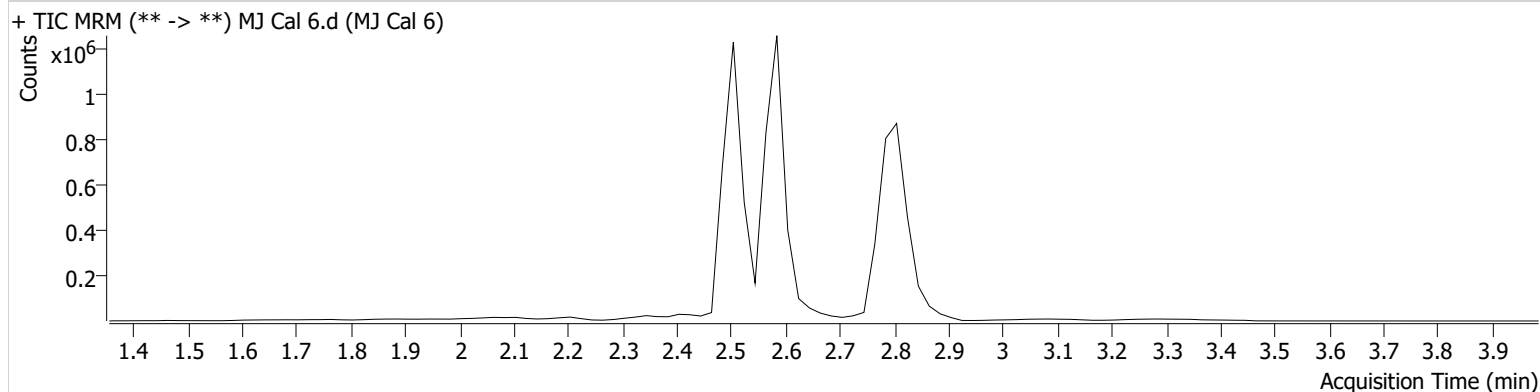


AM #26 Cannabinoids Screen Results

Batch results D:\MassHunter\Data\2021\AM 25-26\060221 AM 25 26 SC\QuantResults\AM 26.batch.bin
Calibration Last Update 6/3/2021 7:42:25 AM

Instrument	Falco (069901)	Data File	MJ Cal 6.d
Type	Cal	Sample	MJ Cal 6
Acq. Method	AM 26 THCS.m	Operator	Sarah Collins
Sample Position	P1-F1	Comment	
Injection Volume	10		
Acq. Date-Time	6/2/2021 11:49:19 AM		

Sample Chromatogram



Name	RT	Resp.	ISTD Resp.	Final Conc.
THC	2.859	37710	95974	48.4754 ng/ml
THC-COOH	2.587	881292	585116	100.9961 ng/ml
THC-OH	2.514	152825	1709271	51.1363 ng/ml

SC

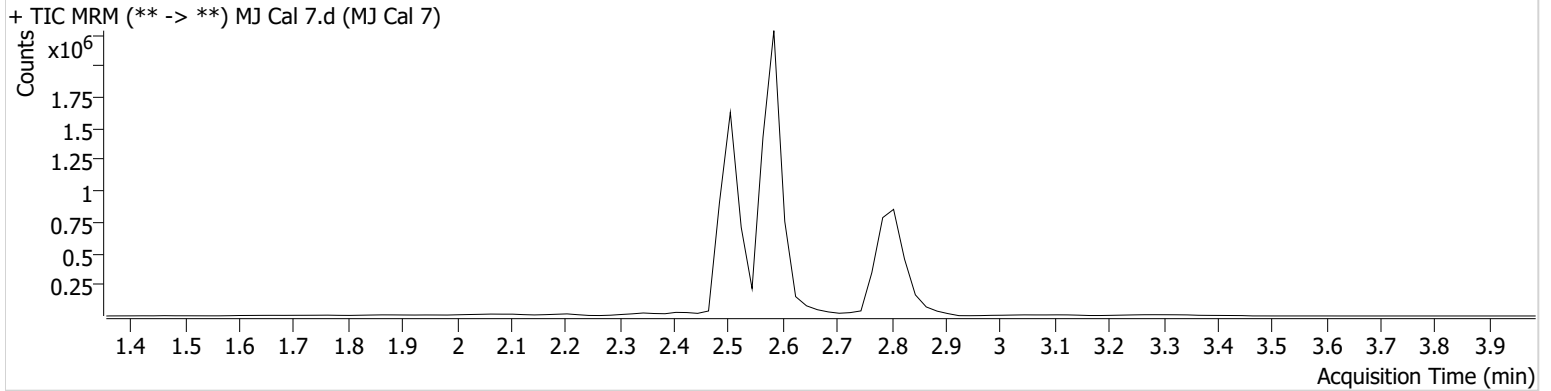


AM #26 Cannabinoids Screen Results

Batch results D:\MassHunter\Data\2021\AM 25-26\060221 AM 25 26 SC\QuantResults\AM 26.batch.bin
Calibration Last Update 6/3/2021 7:42:25 AM

Instrument	Falco (069901)	Data File	MJ Cal 7.d
Type	Cal	Sample	MJ Cal 7
Acq. Method	AM 26 THCS.m	Operator	Sarah Collins
Sample Position	P1-G1	Comment	
Injection Volume	10		
Acq. Date-Time	6/2/2021 11:55:50 AM		

Sample Chromatogram



Name	RT	Resp.	ISTD Resp.	Final Conc.
THC	2.839	75105	89758	103.4477 ng/ml
THC-COOH	2.587	1877257	508657	247.5949 ng/ml
THC-OH	2.514	283094	1622772	100.0179 ng/ml